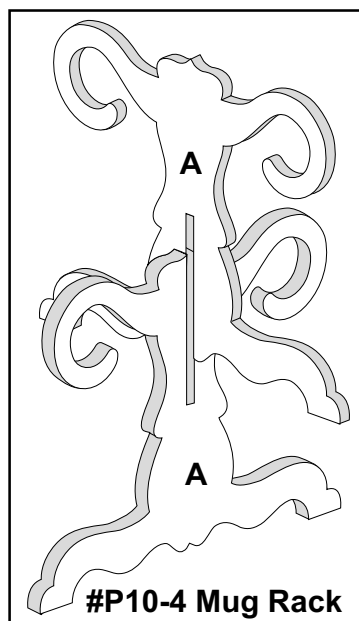




#P10-4 Mug Rack

Are you looking for a quick and easy project that is very useful as well? This handy mug rack fits the bill! 10"H.



GREAT AMERICAN SCROLLSAW DOWNLOADABLE PATTERNS™

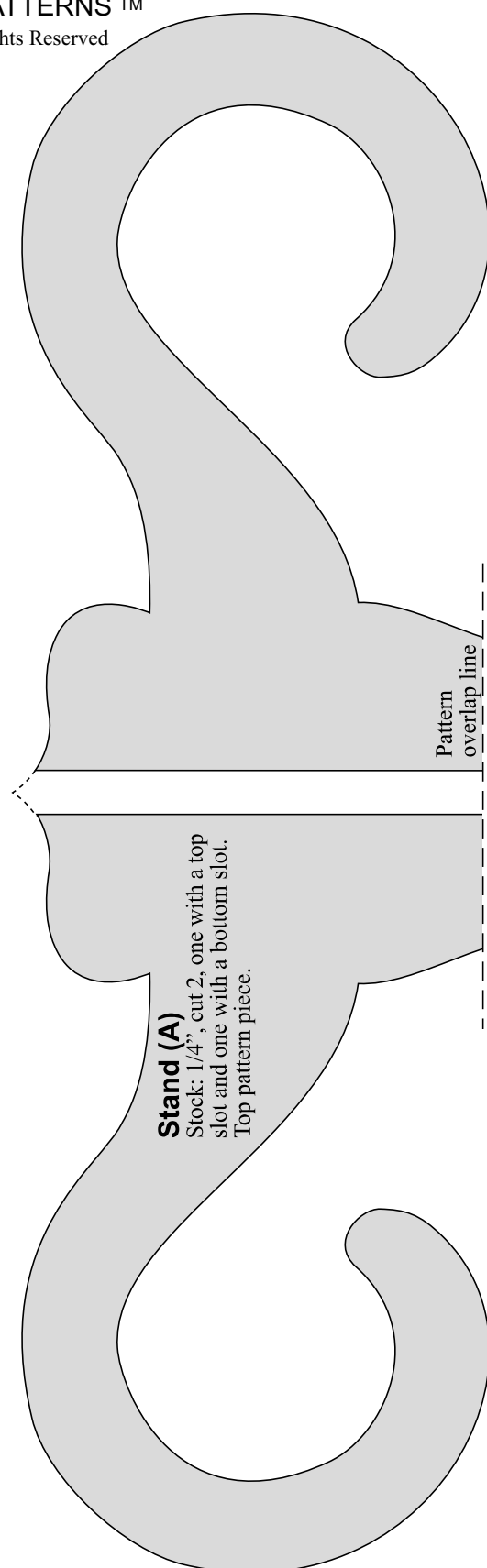


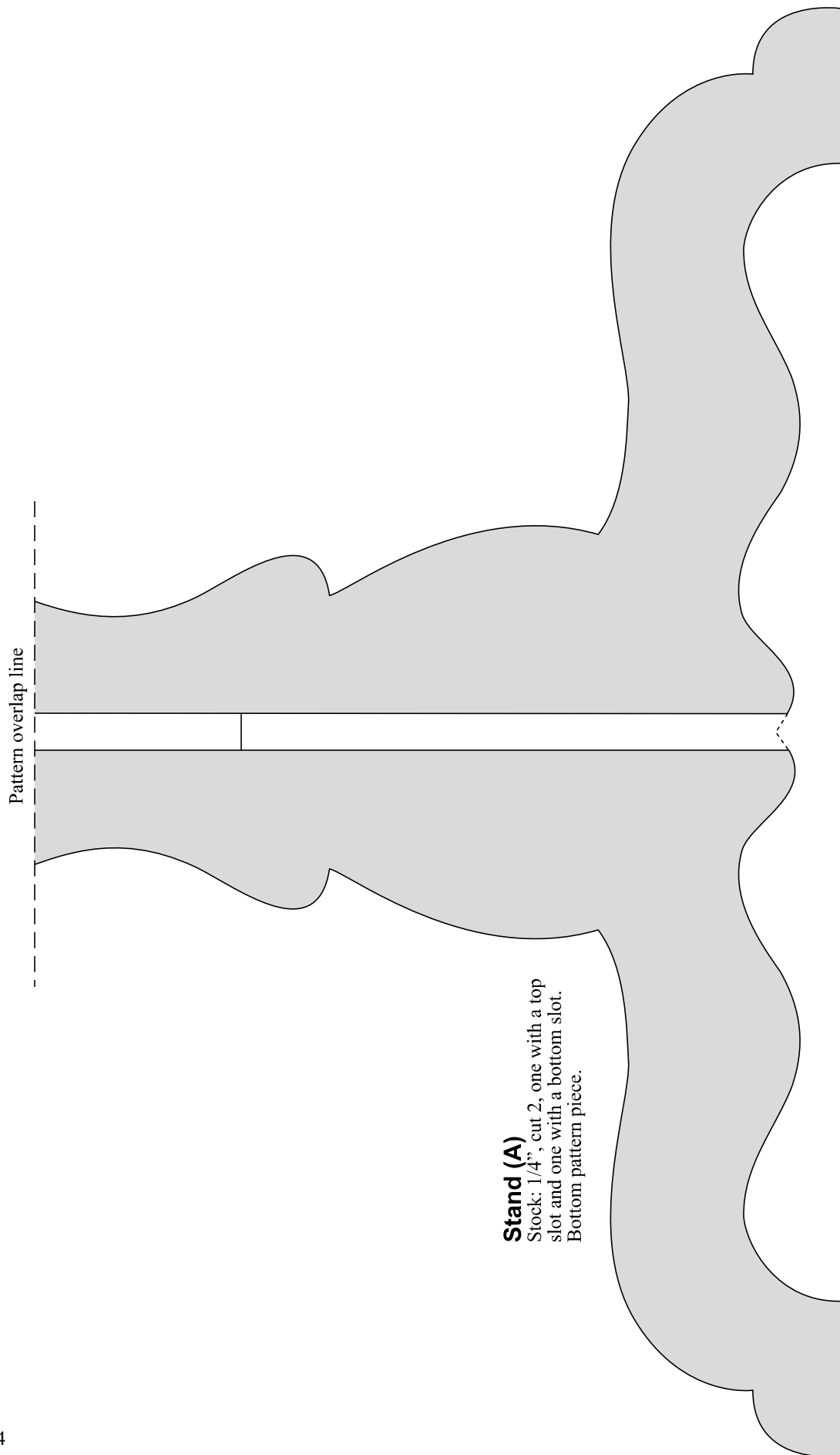
The Berry Basket © Copyright 2002 • All Rights Reserved
www.greatamericanscrollsaw.com
 a division of The Berry Basket

| #P10-4 Mug Rack | | | |
|-----------------|------|-----|-------------------------------|
| Description | Item | Qty | Size |
| Stand | A | 2 | 1/4" T x 8 3/8" W x 10 1/4" L |

#P10-4 Assembly Instructions

1. Select your material from a variety of hardwoods or solid core plywood.
2. Measure each pattern piece and cut the work pieces to size accordingly. Sand as necessary.
3. Make all pattern pieces by adhering the paper patterns to the work pieces with a repositionable spray adhesive. Cut the outer shapes and any interior designs. And drill where indicated.
4. Remove all paper patterns. Sand where needed. The edges can be rounded by sanding or using a small roundover router bit if desired.
5. Assemble by interlocking the 2 pieces together. For permanent assembly they can be glued, as well. Finish as desired.





Stand (A)
Stock: 1/4", cut 2, one with a top slot and one with a bottom slot.
Bottom pattern piece.